



Marlborough Road

Southport, PR9 0RA

£750 Per Month

Flexi Agent are proud to present this modern two-bedroom apartment to the rental market. Situated on Marlborough Road in Southport, just off the B5245, the property enjoys a prime location within walking distance of Lord Street, which offers a wide variety of bars, restaurants, cafés, shops, and local amenities. The picturesque Marine Lake and Hesketh Park are approximately a 10-minute walk away, providing peaceful green spaces. Southport Train Station is also nearby, offering excellent transport links to and from Liverpool.

The apartment briefly comprises: Open plan Living room and kitchen, two well-proportioned bedrooms and a bathroom.

Viewings available on request.

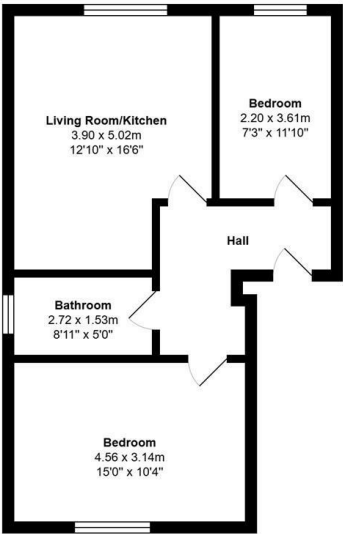
Deposit £865.38

Viewing

Please contact our Flexi-Agent Southport Lettings Office on 01704 889455 if you wish to arrange a viewing appointment for this property or require further information.



Floor Plan



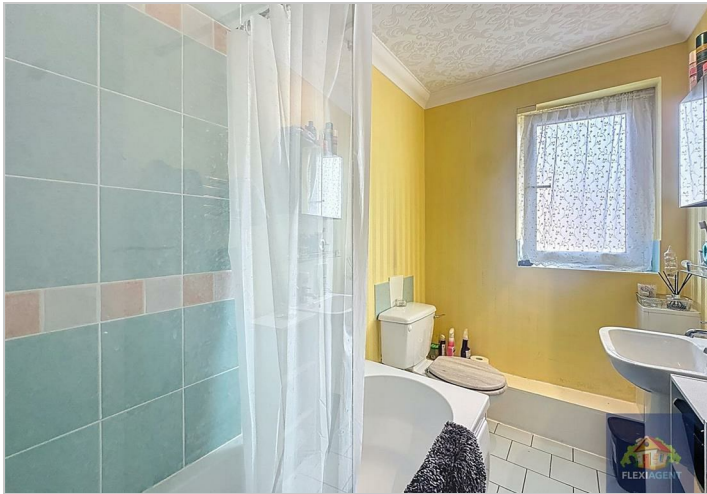
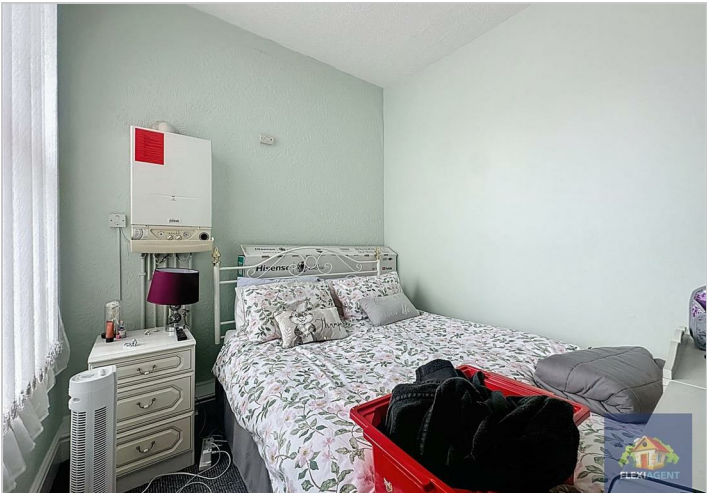
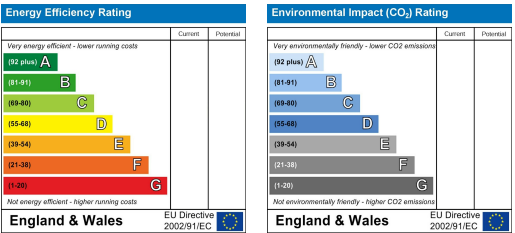
Total Area: 54.0 m² ... 581 ft²

All measurements are approximate and for display purposes only

Area Map



Energy Efficiency Graph



These particulars, whilst believed to be accurate are set out as a general outline only for guidance and do not constitute any part of an offer or contract. Intending purchasers should not rely on them as statements of representation of fact, but must satisfy themselves by inspection or otherwise as to their accuracy. No person in this firms employment has the authority to make or give any representation or warranty in respect of the property.